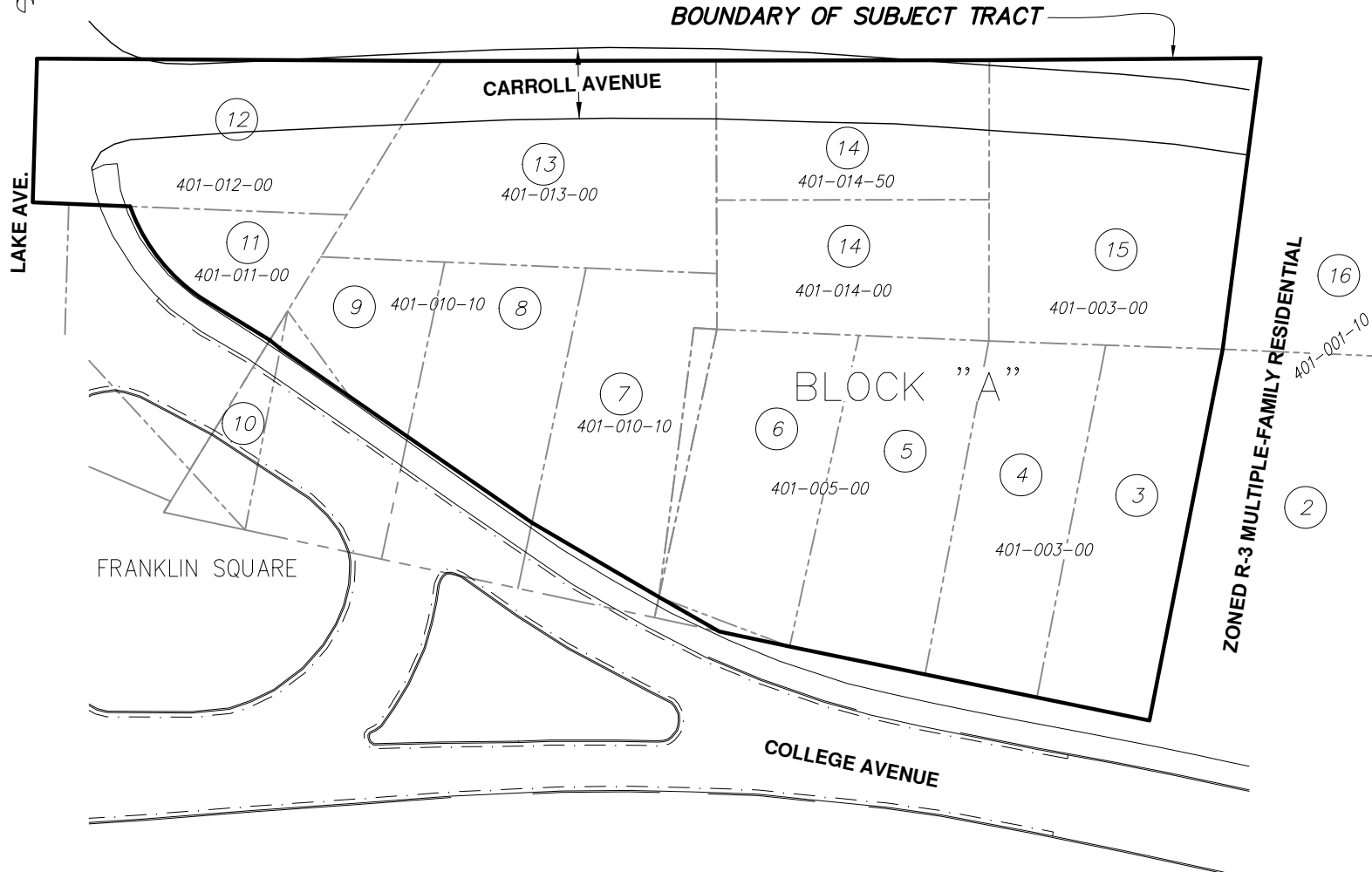


EXHIBIT A

SUBJECT TRACT 1.61 ACRES (+/-)

**LOTS 3, 4, 5, 6, 7, 8, 9, 10, 11, 12, 13, 14 & 15, BLOCK "A", SUPERVISOR'S PLAT OF EAST HOUGHTON
 ADDRESSES: 902, 908, 912 COLLEGE AVE. AND UN-ADDRESSED LOTS ON CARROLL AVE.
 LOTS 3, 4, 5, 6, 7, 10, 11, 12, 13, 14 & 15 ARE CURRENTLY ZONED R-3 MULTIPLE-FAMILY RESIDENTIAL,
 PROPOSED CHANGE TO B-2 COMMUNITY BUSINESS WITH CONDITIONS.
 LOTS 8 & 9 ARE CURRENTLY ZONED B-3 GENERAL BUSINESS, PROPOSED
 CHANGE TO B-2 COMMUNITY BUSINESS WITH CONDITIONS**



PROJECT NO. H02-03130
 DATE: 11-09-23
 DRAWN: J. WEST
 DWG: ...HODGE SEARCH
 REVISED:

**FOR: THE CITY OF HOUGHTON
 PROPOSED ZONING CHANGES
 PART OF BLOCK A, SUP. PLAT OF EAST
 HOUGHTON, CITY OF HOUGHTON, MI**

100 PORTAGE
 STREET
 HOUGHTON, MI
 49931
 (906) 482-4810



OTHER OFFICES IN: IRON MOUNTAIN, SAULT STE. MARIE, ISHPEMING & MARINETTE, WI.